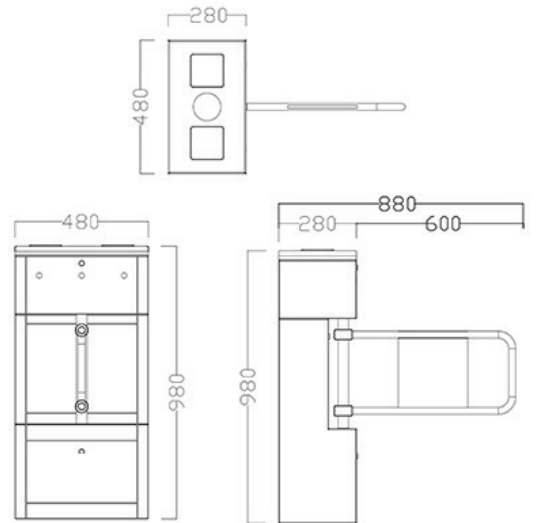
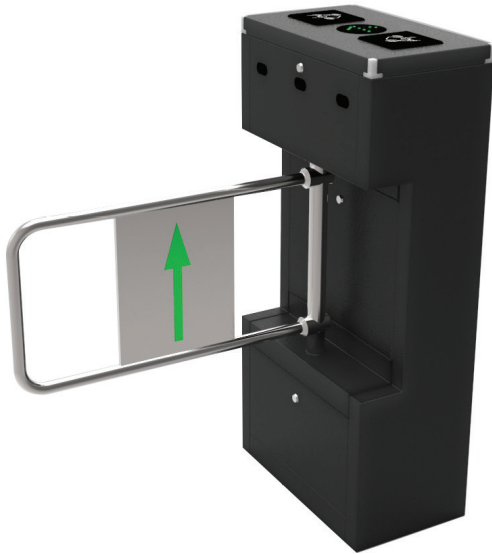


CRT LV328 Swing Gate



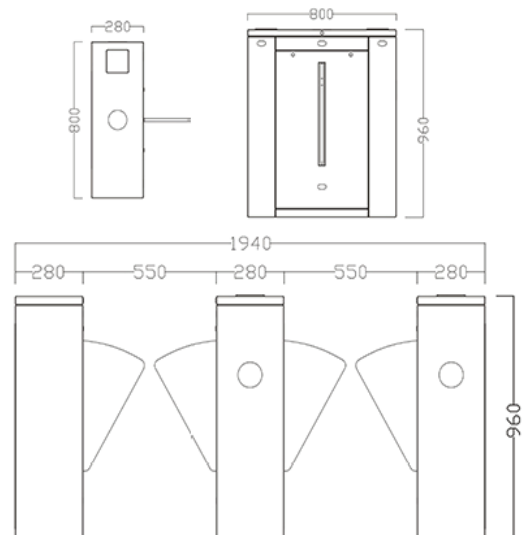
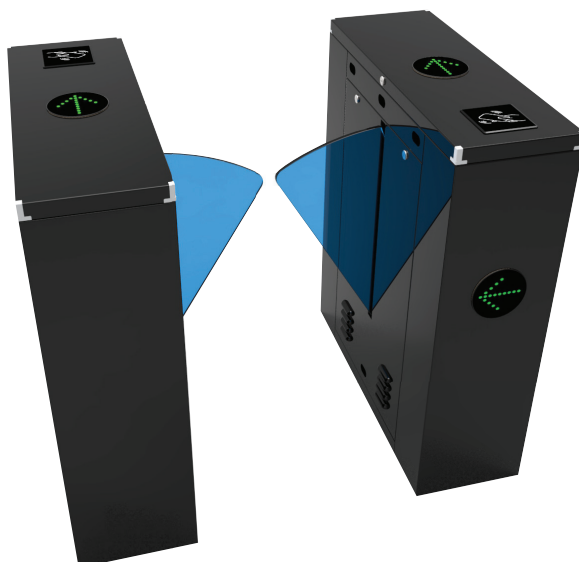
Technical Data

Passage width : < 800mm
Throughput rate : 35p/m
Power supply : 100~240V(ac)
Operational voltage : 24V(dc)

Max power consumption : 35w
Frequency : 50~60hz
Protection level : > 44ip
Working temperature : -25~+70°C

Electro-magnetic drive : dc
Size : 480x280x980mm
Net weight : 40kg

CRT L228 Flap Barrier



Technical Data

Passage width : < 550mm
Throughput rate : 35p/m
Power supply : 100~240V(ac)
Operational voltage : 24V(dc)

Max power consumption : 35w
Frequency : 50~60hz
Protection level : > 44ip
Working temperature : -25~+70°C

Electro-magnetic drive : dc
Size : 800x280x960mm
Net weight : 40kg